



# PHOENIX PUBLIC SCHOOL

ISANPUR, AHMEDABAD - 382443.

DATE:	SUBJECT:	Roll No.:
STD.:	Suppl. No.:	Supervisor's Sign./
	2017-18	Jignya

FA: 4 : Maths Revision chap - 3, 4, 5  
 Marks - 30 std - II<sup>nd</sup>,  
 Vedant Public School

Q.1) Tick the correct option: 10 mark

1) How many sides are there in a rectangle?

Ans:  a) Four  b) Two  c) Three

2) How many sides are there in a triangle?

Ans:  a) Four  b) Two  c) Three

3) How many corners are there in a square?

Ans:  a) Two  b) Three  c) Four

4) How many faces and edges are there in a cylinder?

Ans: a) 2 faces and 3 edges  
 b) 3 faces and 2 edges  
 c) 1 face and 2 edges

5) How many sides and corners are there in a circle?

Ans: a) 1 corner 1 side  
 b) 2 corner and 1 side  
 c) No corner, No side



$$\square + \square + \square + \square + \square = \square$$

6) How many edges and faces in a cube?

- Ans: a) 4 faces and 14 edges  
~~b) 6 faces and 12 edges~~  
 c) 6 faces and 14 edges

7) What the two equal parts of a whole is called?

- Ans: a) one third ~~b) Half~~ c) one fourth

8) What are the three equal parts of a whole is called?

- Ans: a) Half ~~b) one third~~ c) one fourth

9) What are the two of three equal parts of a whole is called?

- Ans: a) one third ~~b) Two third~~ c) one fourth

10) What are the three of fourth equal parts of a whole is called?

- Ans: a) Two Third ~~b) Three Fourth~~ c) Half

11) Which symbol is used for Indian rupees?

- Ans: a) ₹ ~~b) Rs.~~ c) Re.

12) 1 Rupees = 100 paisa

- Ans: ~~a) 100~~ b) 10 c) 1000

13) 90000 paisa = 900 Rupees

- Ans: ~~a) 900~~ b) 90 c) 9

14) 5020 Paisa = 50 Rupees 20 Paise

- Ans: a) 500 Rupees 20 paise



$$\square + \square + \square + \square + \square = \square$$



# PHOENIX PUBLIC SCHOOL

ISANPUR, AHMEDABAD - 382443.

DATE :	SUBJECT :	Roll No. :
STD. :	Suppl. No. :	Supervisor's Sign./

14) b) 50 rupees 20 paise  
~~Let~~ 50 rupees 2 paise

15) 1000 Rupees = 100000 paisa

Ans: a) 1000

b) ~~100000~~

c) 1000000

Q-2) Fill in the blanks: - 5 Marks

1) A cube has 6 faces and 12 edges

2) Circle has no sides and no corners

3) Pizza is an example of circle.

4) Triangle has 3 sides and 3 corners.

5) 3 rupees = 300 paisa

6) 10 rupees = 1000 paisa

7) ₹ 500 = 50000 Paisa

8) A cone has one edge but two faces.



$$\square = \square + \square + \square + \square + \square = \square$$

9) A cylinder has 3 faces and 2 edges

10) A candle is cylindrical in shape.

Q.3) Convert into Paisa - 5 Marks.

1) ₹ 10 = 1000 paisa

Ans:  $10 \times 100 \text{ Paise} = 1000 \text{ paisa}$

2) ₹ 20 = 2000 Paisa

Ans:  $20 \times 100 \text{ paise} = 2000 \text{ paisa}$

3) ₹ 525 = 52500 Paisa

Ans:  $525 \times 100 \text{ Paise} = 52500 \text{ Paisa}$

4) ₹ 68 = 6800 Paisa

Ans:  $68 \times 100 \text{ Paise} = 6800 \text{ Paisa}$

5) ₹ 820 = 82000 Paisa

Ans:  $820 \times 100 = 82000 \text{ Paisa}$

6) ₹ 115 = 11500 Paisa

Ans:  $115 \times 100 = 11500 \text{ Paisa}$



$$\square = \square + \square + \square + \square + \square = \square$$

7) ₹ 638 = 63800 Paise

Ans:  $638 \times 100 = 63800$  Paise

8) ₹ 723 = 72300 Paise

Ans:  $723 \times 100 = 72300$  Paise

9) ₹ 327 = 32700 Paise

Ans:  $327 \times 100 = 32700$  Paise

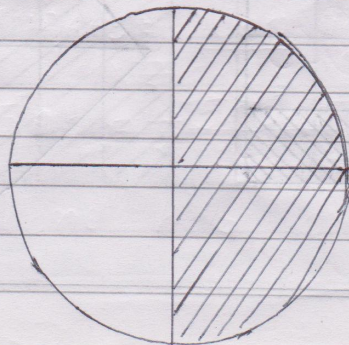
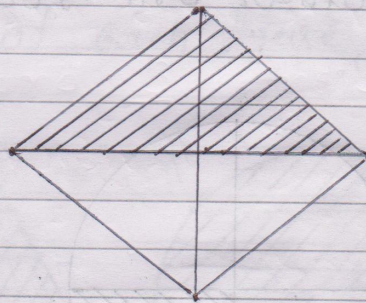
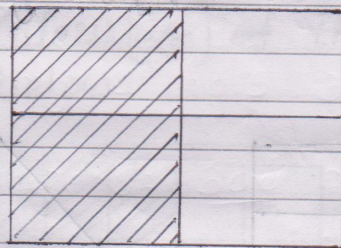
10) ₹ 121 = 12100 Paise

Ans:  $121 \times 100 = 12100$  Paise

Q.4) Fractions: Colour of figure given below  
= 5 Marks.

(1) Colour  $\frac{2}{4}$  of figure given below

Ans:

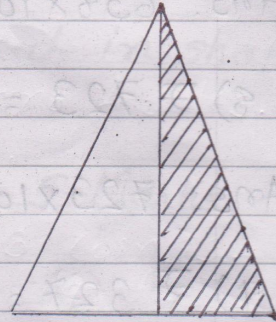
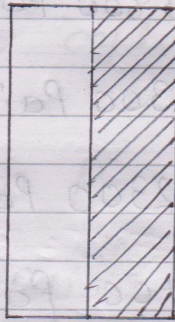
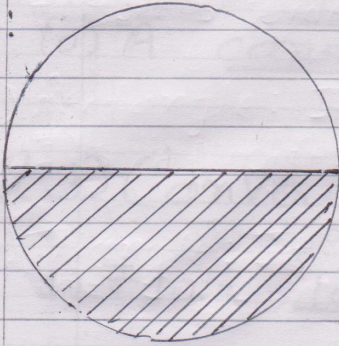




+  +  +  +  =

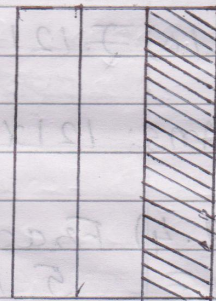
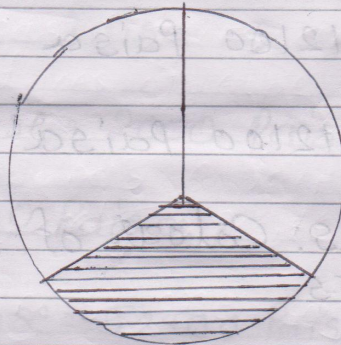
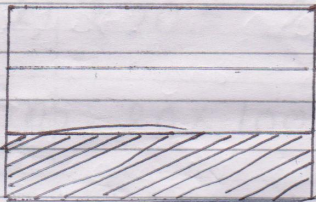
(2) colour half ( $\frac{1}{2}$ ) of figure given below.

Ans:



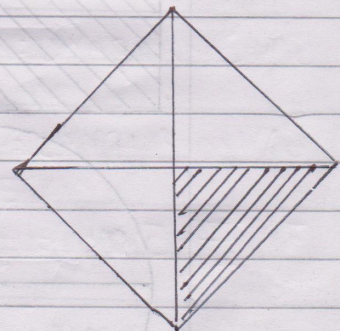
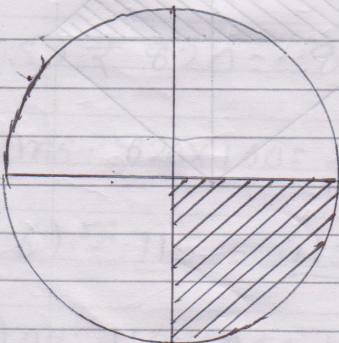
(3) colour one-third ( $\frac{1}{3}$ ) of each figure given below.

Ans:



(4) colour one-fourth ( $\frac{1}{4}$ ) of each figure given below.

Ans:

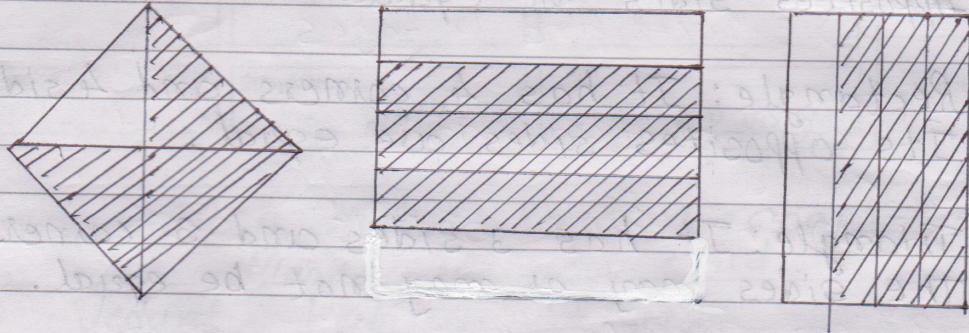




+  +  +  +  =

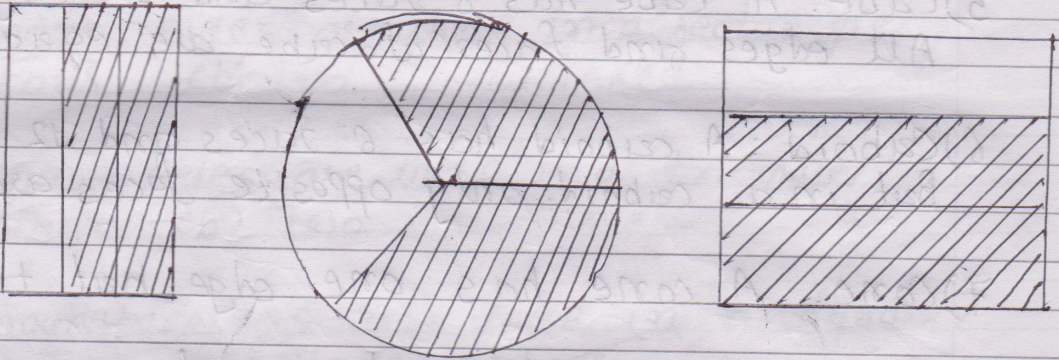
(5) colour three-fourth ( $\frac{3}{4}$ ) of each figure given below.

Ans:



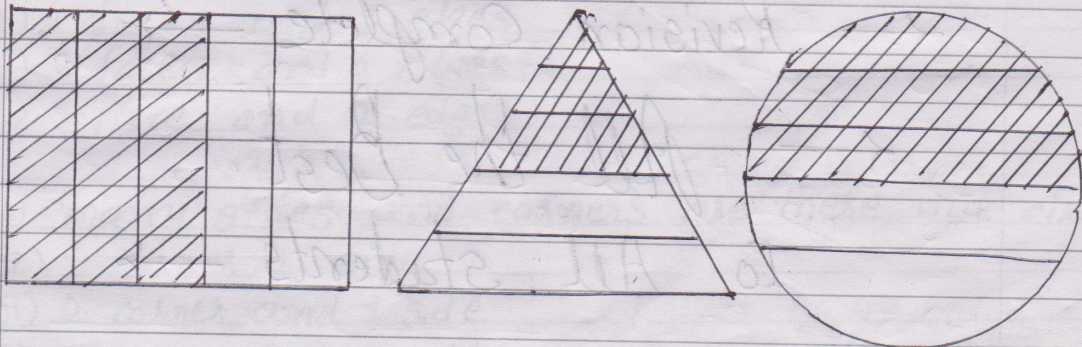
(6) Colour two-third ( $\frac{2}{3}$ ) of each figure given below.

Ans:



(7) Colour ( $\frac{3}{5}$ ) of three-fifth of each figure given below.

Ans:





$$\square + \square + \square + \square + \square = \square$$

Q.5) Definition. (5 Marks)

1) Square: It has 4 corners and 4 sides. Its all sides are equal.

2) Rectangle: It has 4 corners and 4 sides. Its opposite sides are equal.

3) Triangle: It has 3 sides and 3 corners. The sides may or may not be equal.

4) Circle: It has no sides or no corners.

5) Cube: A cube has 6 faces and 12 edges. All edges and faces of a cube are equal.

6) Cuboid: A cuboid has 6 faces and 12 edges. But in a cuboid, only opposite faces are equal.

7) Cone: A cone has one edge but two faces.

8) Cylinder: A cylinder has 3 faces and 2 edges. Three faces and two edges of a cylinder.

← Revision Complete →

← All the Best

To All students →