

Std: IV [2018-19]

Page: (1)

REVISION OF SA-I EXAM
SUB: SciencePART-A

Q1A Tick (✓) the correct option

1) Which of the following is not a mineral?

⇒ (a) Iron (b) Calcium (c) Marble

2) Which of the following is the only planet where life exist?

⇒ (a) Mars (b) Jupiter (c) Earth

3) Human beings and animals breathe in

⇒ (a) Oxygen (b) nitrogen (c) Carbon dioxide

4) Animals breathe out

⇒ (a) Oxygen (b) nitrogen (c) Carbon dioxide

5) plants depend on animals for

⇒ (a) dispersal of seeds (b) pollination (c) both (a) and (b)

6) What is the flat part of a leaf called?

⇒ (a) Main vein (b) Side vein (c) leaf blade

7) plants make food in their _____ with the help of chlorophyll.

⇒ (a) roots (b) flowers (c) leaves

8) Tiny pores on the surface of leaves are called

⇒ (a) Stomata (b) holes (c) lenticles

(1)

(2)

[2018-19]

9) Which of the following is given out by plants during photosynthesis?

⇒ (a) Oxygen (b) carbon dioxide (c) nitrogen

10) What is/are essential for photosynthesis?

⇒ (a) Chlorophyll (b) Sunlight (c) Both (a) and (b)

11) Which of the following does not grow in hilly areas?

⇒ (a) Coconut (b) Spruce (c) Deodar

12) Which of the following is an Evergreen tree?

⇒ (a) Sal (b) Neem (c) Rubber

13) Plants that grow on land are called . . .

⇒ (a) aquatic plants (b) terrestrial plants (c) Aerial plant

14) Which of the following is a fixed aquatic plant?

⇒ (a) Lotus (b) Hydrilla (c) water hyacinth

15) Which one of these is an aquatic animal?

⇒ (a) polar bear (b) bat (c) dolphin

16) Animals that live both on land and in water are called . . .

⇒ (a) Amphibian (b) aerial (c) aquatic

17) Animals that live both on land and in water are called . . .

⇒ (a) terrestrial animals (b) aquatic animals
(c) amphibians

18) A _____ changes its colour according to the surroundings! (2)

⑤

[2018-19]

⇒ (a) deer (b) monkey (c) Chameleon

19) Which of the following is a mammal?

⇒ (a) Bat (b) Butterfly (c) Snake

20) Animals that give birth to young ones are called

⇒ (a) reptiles (b) amphibians (c) mammals

21) All eggs have a thin and hard protective shell called _____

⇒ (a) Embryo (b) Eggshell (c) yolk

22) A Cockroach has _____ stages of development.

⇒ (a) two (b) three (c) four.

23) Which of these is the main source of carbohydrates?

⇒ (a) potato (b) milk (c) fish

24) Which of the following is not a kind of vitamin?

⇒ (a) Vitamin A (b) Vitamin K (c) Vitamin P

25) Which of the following nutrients give us energy?

⇒ (a) Carbohydrates (b) proteins (c) vitamins

26) Which of the following is not a protein-rich food?

⇒ (a) milk (b) pulses (c) Butter

27) Our body cannot digest _____

⇒ (a) cereals (b) minerals (c) fibres

28) How many teeth does a three-year child have?

⇒ (a) 16 (b) 20 (c) 30

③

(4)

[2018-19]

- 29) Which teeth are called, cutting teeth?
⇒ (a) Incisors (b) canines (c) molars
- 30) How many premolars are there in each jaw?
⇒ (a) four (b) eight (c) sixteen
- 31) molars are next to the
⇒ (a) incisors (b) canines (c) premolars
- 32) Mushrooms are rich source of
⇒ (a) Vitamin (b) proteins (c) minerals
- 33) Plants like Spinach, Cabbage and mint store food in
⇒ (a) stem (b) roots (c) leaves
- 34) plants store the prepared food in the form of
⇒ (a) salt (b) sugar (c) starch
- 35) Which vitamin it helps in blood clotting?
⇒ (a) Vitamin-D (b) Vitamin E (c) Vitamin-K
- 36) The _____ is a hollow bag of muscles.
⇒ (a) Stomach (b) pancreas (c) liver
- 37) Which vitamin keeps the eyes and skin healthy?
⇒ (a) Vitamin-C (b) Vitamin-D (c) Vitamin A
- 38) The upper part of the teeth are called
(a) Crown (b) molar (c) Incisors
- 39) The temporary set in young children are
(a) permanent teeth (b) milk teeth (c) none of them

(5)

[2018-19]

40) The milk teeth start falling off when the child is about _____ years old.

- (a) 9 yrs (b) 6 yrs (c) 3 yrs.

41) The main source of heat and light on the earth is the _____.

- (a) Sun (b) Moon (c) stars.

42) We also get vitamin _____ from sunlight.

- (a) Vitamin D (b) Vitamin-A (c) Vitamin-C.

43) What is needed for growth of our body?

- (a) minerals (b) water (c) light

44) Animals that live on, or in, the bodies of other animals.

- (a) parasites (b) Aerial (c) Arboreal

45) A _____ lays thousands of eggs in water.

- (a) Snake (b) frog (c) fish.

PART - B

Q2) [A] fill in the blanks :-

- 1) Canines are called tearing teeth.
- 2) It is important for us to have a balance diet.
- 3) Mammals produce milk to feed their young ones.
- 4) The natural place of a living thing is called its habitat.
- 5) The Chlorophyll gives green colour to the leaves.
- 6) Animals that live on land are called terrestrial animals.
- 7) The larva of a butterfly is called a caterpillar.
- 8) vitamins help our body to fight against diseases.

(5)

⑥

[2018-19]

- 9) The layer just inside the enamel is called dentine.
- 10) Reptiles do not sit on the eggs to keep them warm.

[B] → Write True or False :-

- 1) Enamel is a white outer covering. [True]
- 2) A cavity appears in the outer part of a tooth. [false]
- 3) Pulses are rich in fats. [false]
- 4) Whales and dolphins are big fish. [True]
- 5) The colour of the yolk is white. [false]
- 6) Water helps us in the digestion of food. [True]
- 7) Minerals are needed for our growth. [True]
- 8) Photosynthesis takes place at night. [false]
- 9) Animals do not depend on plants for their food. [false]
- 10) Birds, Insects, reptiles and fish lay eggs. [True]

Q3) [A] Match the following

- | A | B |
|--------------|--------------------------------------|
| 1) Vitamin A | a) Keeps our eyes and skin healthy. |
| 2) Vitamin D | b) required for strong bones. |
| 3) Vitamin K | c) helps in blood clotting. |
| 4) fat | d) ghee. |
| 5) Enamel | e) the hardest material of our body. |
| 6) Molars | f) also known as grinding teeth. |
| 7) Canines | g) also known as tearing teeth. |
| 8) Incisors | h) used for cutting and biting food. |

[B] ⇒ Give reasons for the following :-

- Q1) Plants in desert have few or no leaves.
 Any plants in desert have few or no leaves.
 Loss of water.

⑥

(7)

[2018-19]

Q2) The trees in hilly areas are cone-shaped.

Ans The trees in hilly areas are cone-shaped, so that snow can easily slide off their branches.

Q3) polar bears have fur on their body.

Ans polar bears live in cold areas. So they have fur on their bodies to keep them warm.

Q4) frogs and lizards go for hibernation.

Ans frogs and lizards go for hibernation to protect themselves from the cold as they cannot bear the cold.

Q5) lions have long, pointed curved front teeth.

Ans lions have long, pointed curved front teeth to tear off and hold the flesh.

Q6) Chameleons change their colour according to their surroundings.

Ans Chameleons change their colour according to their surroundings to merge or mix with their surroundings and confuse their enemies.

Q4) [A] Answer the following Questions :-

Q1) Why is oxygen an important gas?

Ans All humans and animals need oxygen to breathe in. Oxygen releases energy from the food we eat.

Q2) Why are the leaves of most of the plants green?

Ans leaves have chlorophyll a green coloured

(7)

⑧

[2018-19]

pigment which gives green colour to the leaves.

Q3) Where do plants store their Extra food?

Ans plants store their Extra food in roots, stems and leaves.

Q4) How do non-green plants get food?

Ans Non-green plants grow on wet things like rotting wood, vegetables, etc from which they get food.

Q5) Why do the Aerial animals have a light body?

Ans Aerial animals have a light body because of their light bones and feathers.

Q6) What are arboreal animals?

Ans Animals that spend most of their time on trees are called arboreal animals.

Q7) What is reproduction?

Ans The process by which the living things produce young ones of their own kind is called reproduction.

Q8) Which nutrients does our body need?

Ans Our body needs carbohydrates, fats, proteins, vitamins and minerals.

Q9) What is a balance diet?

Ans A diet contains all the nutrients in the correct proportion is called a balance diet.

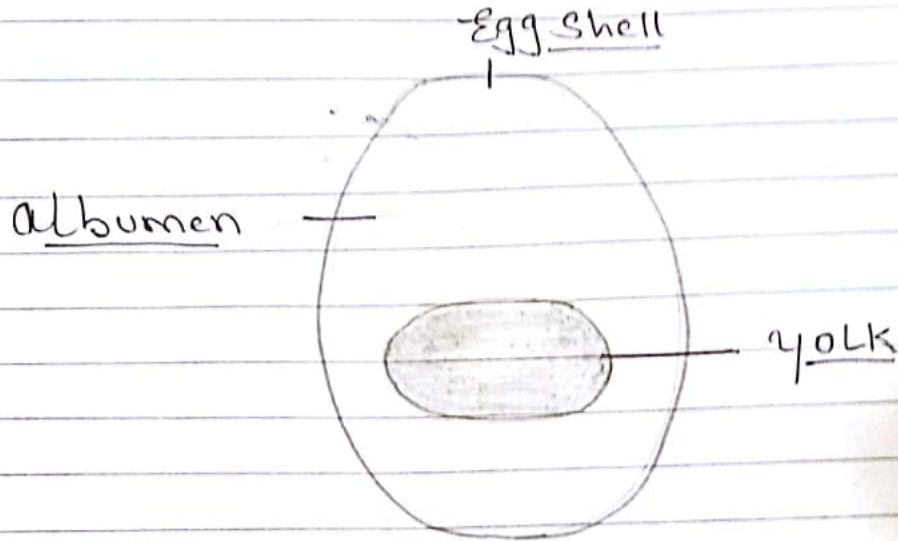
⑧

9

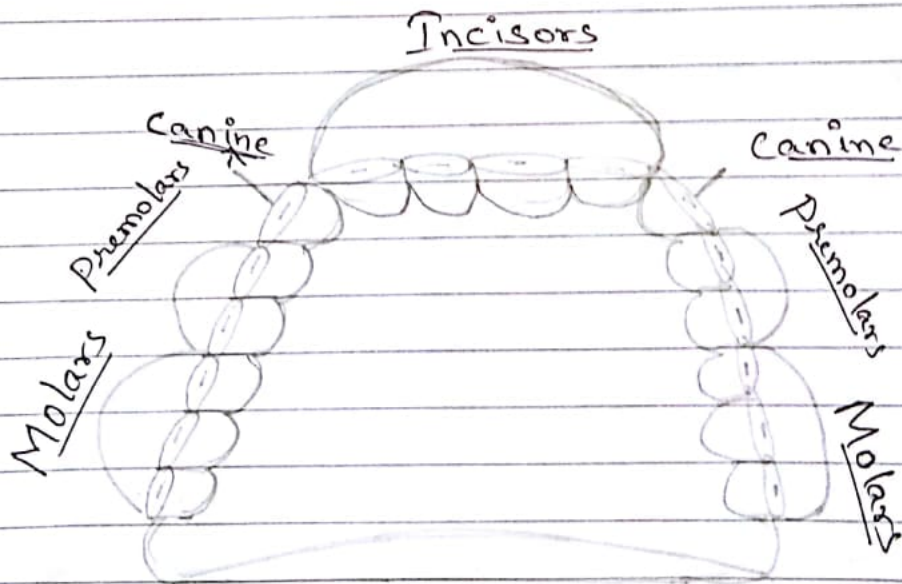
[2018-19.]

[B] Draw the Diagram:-

(1) Structure of an egg:-



(2) Different kinds of teeth



9